



# Lights of Life Changes the Skyline of Wichita

Harry Hynes Memorial Hospice changed the skyline of Wichita for this holiday season. The Lights of Life tree was placed on top of the Harry Hynes downtown headquarters on Market. It stood 80 feet tall and featured over 3,200 bright, colorful, cheery, and festive LED light bulbs.

The tree is part of the Lights of Life celebration where a donation allows a person to “light” a light bulb in memory or honor of their loved one. The name of each dedication was included in our tree lighting ceremony, in the Lights of Life program, on our website, and digital donor wall.

The official tree lighting ceremony took place on Sunday, November 17, 2024. Community members and Harry Hynes supporters joined in the commemoration and witnessed this special holiday tradition.

Donations to the Lights of Life tree enable Harry Hynes Memorial Hospice to continue providing care, education, resources, and support to those facing life-threatening illnesses.

Special thanks to the team of “tree elves”, led by Ed and Easton Griswold (yes like Clark Griswold), who designed and installed the tree.



# Lights of Life Glows in Southeast Kansas

Harry Hynes Memorial Hospice celebrated the Lights of Life in Southeast Kansas with holiday trees in Coffeyville, Oswego, Parsons, and Pittsburg for the second year. Each community had a bright, beautiful, illuminated tree that was lit throughout the holiday season. This tradition is to celebrate the holidays and the remembrance of family, friends, and members of our community whose memory shines brightly in our hearts. For each donation, a tree light was dedicated in memory or honor of someone special in the location of choice.

Official tree lighting ceremonies took place in each city with community members and Harry Hynes supporters joining in the commemoration and witnessing the moment the tree was lit for this holiday tradition.

The name of each dedication was included in the tree lighting ceremony, in the Lights of Life program, on our website, and digital donor wall. Support for the Lights of Life assists us in our mission enabling people to live with dignity and hope while coping with loss and terminal illness.

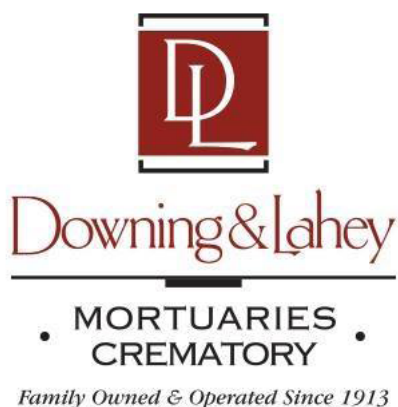
For a list of the Lights of Life dedications, visit [www.hynestememorial.org/fundraising-events/#lights-of-life](http://www.hynestememorial.org/fundraising-events/#lights-of-life).



# Thank you to Our 2024 Lights of Life Sponsors



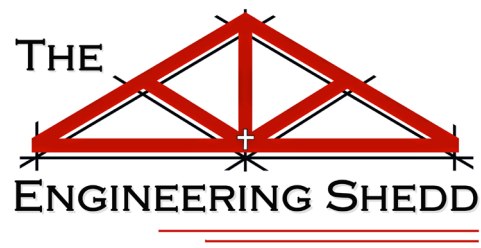
**DeVore  
Foundation**



**Don & Lora Barry**

*Family Owned & Operated Since 1913*

**Ed & Easton Griswold**



**Carson-Wall Funeral Services**

# Looking Ahead for 2025

**Leave A Legacy** is an opportunity for families to honor their loved ones in a meaningful way that goes beyond a traditional memorial. Families might have the capacity and interest to commemorate their parent/child/grandparent/friend in a way that makes a huge impact on the agency while establishing a semi-permanent tribute. Four areas in the agency are available for a person to be honored: our Hospice Center at Ascension Via Christi St Francis, Memory Garden at 21st and K96 in Wichita, Harry Hynes offices or the Honor A Hospice Hero program.



**Honor A Hospice Hero** is a program that allows a family to pay special tribute to the hospice staff person that made their experience exceptional. Our staff are not able to accept gifts of gratitude directly, but through our Honor A Hospice Hero program, the staff person can be recognized and the family can make an impactful gift to the agency.

**Friends of Hospice** board was once an active, vibrant opportunity for community members to volunteer their time helping spread awareness and raising critical funds for the agency. To everyone's best recollection, it has been 10+ years since that board dissolved. It would be our hope and effort to bring it back. The hope with the board would be to solicit their feedback on what ways they'd want to contribute and how best to get the program started again. Next steps is to schedule a meeting to test interest.

**To learn more about Leaving a Legacy, Honor A Hospice Hero, or are interested in being a part of the Friends of Hospice advisory council contact Director of Donor Development, at 316-265-9441.**

# Beryl Silkey Hospice Gown Sewing Event

For the 9th consecutive year, the Harry Hynes volunteer department hosted the Beryl Silkey Hospice Gown Sewing Event. With the Wichita Chapter of the America Sewing Guild taking the lead, along with the Sedgwick County 4-H Fiber Arts Class and Harry Hynes Memorial Hospice Hynes Ambassadors Volunteers, nearly 250 beautiful hospital gowns were made! Over a span of 7 hours, approximately 60 volunteers pieced together lovely fabrics, embroidered pockets, and added dainty details to provide a much-needed bright spot to those facing end of life. Months of preparation go into pulling off this event in only one day! Our staff take great pride in being able to donate these special gowns to patients in need, bringing a smile to patients and their loved ones. This year, fabric was donated by many members of the sewing guild chapter, as well as financial support from an anonymous donor. We were also gifted the use of the 4-H hall at the Sedgwick County Extension Service by Fiber Arts Instructor, Julie Crow.



## Jiggs Nelson Quality of Life



Long time volunteer, Shirlene Simon, was awarded the Jiggs Nelson Quality of Life Award for 2024. The award, which included a \$500 gift to Harry Hynes, was presented to Shirlene at the Wichita Medical Research and Education Foundation's 75th anniversary celebration held on November 7th. An extraordinary hospice volunteer for Harry Hynes Memorial Hospice, Shirlene has made an unwavering commitment that has spanned almost 40 years. Her extensive experience has significantly enriched our organization's legacy. While her administrative skills are highly valued, her true distinction lies in providing empathetic care and companionship to patients and families during times of great vulnerability. A committed hospice volunteer, Shirlene has provided thousands of hours and miles to individuals of all ages, spanning those born with birth defects to those facing mortality after a century of life. As a dedicated member of the "Comfort Crossings" volunteer group, Shirlene has generously offered countless hours of her time for vigil support, providing reassurance and comfort to

those patients who face the possibility of dying alone. Shirlene's steadfast presence ensures that no one faces their final journey alone, exemplifying the profound impact of human connection and compassion. Shirlene personifies the true meaning of "quality of life", especially when life's span is measured in mere days. Director of Volunteers, Karen Sherbak states "We congratulate Shirlene on this prestigious honor and are incredibly grateful for the gift of time she continues to give to our patients and their families".

# Holiday Treat Day Spreads Cheer

December brought us around to one of the staff's favorite times of the year. Holiday Treat Day allows the staff and volunteers in each county Harry Hynes serves to spread cheer to our patients. This year, thanks to over 100 volunteers and Harry Hynes employees, we were able to donate 300 packages of homemade yummy goodness! Holding three separate events, covering the Southeast Kansas and Wichita service areas, volunteers baked, frosted, and sugar-coated their favorite holiday treats. The treats were then beautifully packaged with love and delivered to each patient on our service. The hearts of staff are filled with joy as they hand deliver these treats to each patient under our care. This year, a huge thank you to Pitsco, who again donated over 200 handmade Harry Hynes Christmas ornaments as well as hosted the event at their facility in Pittsburg. In Wichita, community volunteers from Fidelity Bank also lent a hand with baking and providing volunteers to help package the treats. We love partnering with these organizations and appreciate their initiatives in the community!





# Thank you to all those who have donated in memory or honor of the following:

Donations were made from July 22 to December 31, 2024.


This list excludes the Lights of Life dedications. To view the Lights of Life dedications, visit  
[www.hynesModule.org/fundraising-events/#lights-of-life](http://www.hynesModule.org/fundraising-events/#lights-of-life)

Vella Fern Adams  
Willie R. Akins  
Martha Elaine Allison  
Jerry D. Alloway  
Gail Baird  
Abby Baker  
Jean M. Barber  
Sam Battles  
B. Eldis Beets  
Pamela K. Berenson  
Audrey Bishop  
Shirley K. Block  
Roger Bockelman  
Charlotte Bowman  
Viola Brannen  
Norma Ackerman Brockert  
John N. Brooks  
Fred L. Brown, Jr.  
Kenneth (Kenny) Murle Brown  
Emily V. Bump  
Shirley J. Burnett  
Keith "Bacon" Campbell  
Margaret Ann Cantrell  
Betty J. Davis Carter  
Kenneth R. Cattaneo  
Lois J Chaves  
Jack D. Chism, Jr.  
Marsha S. Clark  
Nadine Clingerman  
Denise R. Cooley  
L. Jean Copple  
Gary Cordes  
Forrest L "Frosty" Cotten  
Robert E. Couch

Edward A. Crader  
Belenda G. Crawford  
Donna Dianne Creel  
Richard R. Crocker  
Gloria Crossman  
Paul Edward Dalrymple  
Herbert Randy Damman  
Benny L Darbro  
Arthur "Art" Henry Day  
Farris G. DeGraff  
Jay DeMars  
Brenda Lee Deringer  
Joyce E. Eaton  
Patricia Callaway-Engelken  
Kelton L. Farris  
Terri Ashida-Fields  
Willa Mae Findley  
William L. Fish  
Patricia L. Fitzwilliam  
William "Bill" Flick, Jr.  
Carolyn Fowler  
Thomas G. Francis  
John E. Fredrickson  
Theodore French Sr  
Wayland Friend  
Shirley A. Froebe  
Forest J. Gates  
Leo and Margaret Gerber  
Davidson "Dave" Ghram  
David M. Gird  
Melody L. Goldsmith  
Norma J. Gordon  
Catherine (Rose) Gorges  
Debra Gratz

Curtis D. Gridley  
Kenneth Leon Gurley  
Rudolph M Gutierrez  
Rebecca "Becky" J. Hardaway  
Robert H. Hare  
Marsha Kay Harris  
Adryan L. Hauck  
Robbie Haynes  
Paul A. Head  
Doris and Pete Heineman  
Jon Hesse  
Sam G Hewlett  
George Heyen, Jr.  
Carolyn A. Hilbert  
Barbara Lee Hill  
Ramona D. Hill  
Judith Holstein  
Pamela L. Holt  
Daniel W. Holter  
Harold D. Hood  
Antonya Eva Hullinger  
Sterling Dale Hutchins  
George Sherman Hyatt  
Gerald L. Isaacson  
Carl T. Jaax, Jr.  
Myron and Betty Janzen  
Lawrence and Anna Jensen  
Barbara J. Jerome  
James M Jerome  
Anita "Sue" Johnson  
Betty J. Johnston  
Pamela Kay Jones  
Flora W. Kasowski  
Joshua Kerschen





Rusty Kilgore  
Joyce Irene Klingenberg  
Verna M. Krause  
Rose M. Kunselman  
Stuart E. and H. Catherine Lane  
Sonia D. Larimore  
James Lattin  
Sherry Leaf  
Judith Linnebur  
Ryan A. Loder  
JoAnn Lucas  
Carol S. Ludwig  
John Madden III  
Sharon Kay Mann  
Ruth M. Martens  
Kenneth M. Mason  
Patricia I. Matlock  
Hugo E. Mayer, Jr.  
Dora Jean McCullough  
Bobbie Lynn McKinley  
John A. McLuckie  
Larry H. McNickle  
Verlin "Mac" McPheeters  
Jonathan L. Melugin  
Robert H. Melzer  
Terry D. Metz  
Donald J. Meyers  
Jennifer J Mitchell  
Rosemary Ann Morrison  
Glenda T. Morrow  
Steenerik Mortensen  
Muriel Mullikin  
Arthur Craig Mundt  
Michael Murray

Terry Wayne Myers  
Wanda Jo Nace  
Thomas A. Nelson  
Genevieve M. Neumann  
William M. "Bill" Orender  
Theresa A. Palmer  
Linda Diann Parker  
Patty  
Larry Peak  
Glenn and Marguerite Pendleton  
Janice K. Phillips  
James "Jim" Andrew Pippin  
Patrick R. Porter  
Rose Porter  
Jenny M. Powell  
Charles and Patty Ramsey  
David J. Reichenberger  
Ivan M. Rexwinkle  
Tom Richardson  
Barbara J. Riner  
Debora "Debbie" Roberts  
Floyd E Robinson  
Velma Louise Robinson  
Melvadine Rosenhamer  
Helen M. Schmeissner  
Phyllis Marie Schreck  
Dreux S. Schwaiger  
Sharon M. Schwarz  
Darlene M. Shoop  
Beryl Silkey  
Audrey Louise Smith  
Chelsea E. Smith  
Christopher T. Smith  
Jon L. Smith

Harriet Hazel Snyder  
James M. Snyder  
Robert D. Daniels, Sr.  
Marlene Stein  
Jackson Lynn Steiner  
Helen M. Stine  
Darrell Stites  
Betty J Stradford  
Clyde Kermit Taverner  
Charles and Nadine Tholen  
Erma Thomas  
Jackie Lee Thompson  
Bobby Joe Trammell  
Judith A. Treiber  
Gary Dean Trogdon  
Sajonna "Jonnie" Ann Trotnic  
Donald V. Urban  
Phouvieng Vilaythong  
Rex Waggy  
Shirley Wagner  
Prentice D. Waite  
James W Watson  
James Wallace Watson, Jr.  
Darrel Max Webb  
Doris Weber  
Lois J. Welch  
Lynette Wherrell  
Melissa M. Wiens  
Barbara S. "Bobbi" Williams  
Bryan Wilson  
Laverne Wilson  
Evon "Cookie" Wishall  
Elroy J Zogelman



## Veteran's Day Parade

Southeast Kansas employees and volunteers attended the Veteran's Day Parade in Parsons, KS on November 11, 2024. Thank you, Veterans, for your service!

Volunteer Keith R. graciously offered to pull us through the parade on his fully restored antique John Deere hay trailer! We couldn't have done it without his help! Thank you, Keith!



## Veteran's Day Recognition

Carrington Place Assisted Living in Pittsburg, KS invited the staff of HHMH to coordinate a Recognition Ceremony for their Veterans and widowed spouses of Veterans. We are honored to have been a part of this celebration.

New volunteer Monica D. was able to join us for this celebration as her inaugural event. We are so excited to have you on our team, Monica!

# Community Education

The team in Southeast Kansas attended multiple Health Expos and Fairs and provided education on hospice services to the communities we serve. We served as planning committee members of the Health on Purpose Fair in Independence, KS for the last several years and are excited to see the continual growth of this event.



# SEK Marketing Team Volunteers at Special Olympics

Katee C. and Katie D. had a wonderful time volunteering to assist with the Special Olympics in Pittsburg, KS. This year looked a little different, as Seniors from the community were partnered with a Special Olympian to compete in the events. As volunteers, Katee C. and Katie D. were assigned to a pair of athletes and helped them navigate through the events and games! It was a great time, and we can't wait until next year!

# 20th Anniversary Celebration of Our Hospice Center at Via Christi St.

On December 12th, the Harry Hynes Memorial Hospice Center celebrated a remarkable milestone—its 20th anniversary. This event was a momentous occasion to reflect on two decades of compassionate care and to honor the dedicated individuals who have contributed to the hospice center's success.

The celebration was held at the Inpatient Unit, where staff, volunteers, families, and community members gathered to commemorate the impact the facility has had on the lives of countless patients and their families. Over the past 20 years the center has provided comfort and support to individuals navigating the end of life, ensuring that each patient receives personalized, compassionate care.

In addition to celebrating the anniversary, the event also featured a special moment, the dedication of the Hospice Center's chapel in honor of Father Tom Welk. Father Tom's decades of continued service and support, along with his role in offering spiritual guidance and comfort to both patients and families, have a lasting impact on the community.



# Putting the Fun Back In Fundraising

On Thursday, December 6, annual donors, volunteers and staff of Harry Hynes Memorial Hospice were invited to the Wichita Boathouse for an evening of delicious food, dessert, and holiday drinks. Donors were thanked for their support of the mission of Harry Hynes, volunteers were recognized for their hours of selfless service and staff were honored for their commitment to this important cause. A slideshow of our impressive 40+ year history was shown, remarks were shared by CEO & President Jerry Kerschen, Education Director & Chaplain Fr Thomas Welk, and Director of Donor Development Chenay Sloan. Shirlene Simon, 39+ year Harry Hynes volunteer, shared her hospice story and motivation to staying committed to the cause. A video about Harry Hynes was shown and guests received recognition gifts. A fun time was had by all!



## Volunteer Today

Wanting to put your talent to use in a positive and impactful way? Volunteer with us! We would be happy to have you be a part of the team. Visit our website to learn more. [www.hynesModule.org/volunteer/](http://www.hynesModule.org/volunteer/)



# Alcohol Use During Grief

Alcohol use for some individuals increases after the death of a loved one. Several factors illustrate why this increase occurs. Generally, in our American culture statistics show that people will do whatever it takes to avoid pain. The avoidance of pain is one of the primary reasons for alcohol addiction.

For many, alcohol is socially acceptable to use. It is legal and easy to obtain, and initially seems effective in reducing pain. Because it is socially acceptable, and because of the pain due to the loss of a loved one, friends and family may find it harder to ask about a person's drinking.


Some individuals may feel as though they deserve to drink excessively. They may feel that they have a big void in their life, and they have a right to comfort themselves.

They may also think that the feelings they are experiencing are difficult to tolerate and they want to get rid of them quickly. For some people, increased alcohol use becomes a way to protect oneself.

What are the effects of alcohol? Alcohol is a central nervous system depressant. It depresses the areas of the brain that are used in complex and rational thinking, and voluntary control of behavior. Over extended periods alcohol can cause cardiac arrest and cirrhosis.

If individuals feel depressed before the use of alcohol, they may initially receive a kind of "self-medication" relief while drinking. This feeling is short-lived, and always leads to greater feelings of depression when alcohol is not used. The cycle of use: feel better – depression – repeat alcohol use, begins. Prolonged use and alcoholism will lead to longer periods of depression making the cycle even harder to break. Alcohol gives a false sense of mastery and control. Increased alcohol use interrupts the mourning process.

Harry Hynes Hospice is available to help with grief and loss counseling. To contact a grief counselor, visit [hynestemorial.org](http://hynestemorial.org) under Care Services / Grief and Loss Support tab, or call (316) 265-9441.



*"Journey one day at a time. Don't try to solve all the problems of your life at once. Each day's survival is a triumph"*  
- Earl A. Grollman  
*Living When A Loved One Has Died*

*“We bereaved are not alone. We belong to the largest company in all the world – the company of those who have known suffering”  
- Helen Keller*

# Faith and Grief

How does grief affect faith? Perhaps a more useful question is how does faith affect grief? Losing a loved one in death is not easy. The experience can shake you mentally, physically, and spiritually. During the mourning process, it is not uncommon to rethink your beliefs about God and your relationship with a Higher Power.

Part of this rethinking process includes adjustment to the loss of what has seemed to be an “absolute relationship.” Most people do not plan for those who are close to them to die. Married couples, for example, tend to plan for their future together. Depending on their age, couples normally plan on raising children, buying a house, retiring, etc. In this sense, a close relationship may seem to most of us to be something that will never end. When these relationships do come to an end it can be a struggle to adjust to life without the one who was supposed to be there forever.

Part of this experience can be the concern about whether another absolute relationship,

our relationship with God, might also end. For some people this concern may not be put into words or even fully understood. Yet this feeling causes a real faith crisis for the bereaved person. Fear of abandonment by God may become a serious concern.

Faith does not have to be destroyed through the grief experience. In fact, faith can actually become stronger. People dealing with grief often report they find themselves feeling closer to God as they process their grief. In order for positive spiritual growth to occur, it may be necessary to seek some assistance in processing what has taken place and how your faith has been impacted by the grief experience. A hospice grief counselor or your local faith community can help with processing faith and grief.



# Hynes Hallmark



313 S Market  
Wichita KS 67202

ADDRESS SERVICE REQUESTED

Non-Profit Org.  
U.S. Postage  
**PAID**  
Wichita, Kan.  
Permit No. 162

## Quilt Donation

A big thank you to Mary Blake from Winfield, Kansas, for her generous donation of this beautiful quilt for our Giving Tuesday raffle. Her kindness and support mean so much to us, and we truly appreciate the time and effort she put into creating such a lovely piece for this cause. Mary has donated numerous hand-sewn quilts to our agency for raffles. Thank you, Mary!

